



## Legislation Text

**File #:** 25-1095

**Version:** 1

**Agenda Date:** 10/21/2025

**Item #:** 1.

Orange Memorial Park Pickleball Court Project Update. *(Greg Mediati, Director of Parks and Recreation)*

### **RECOMMENDATION**

**It is recommended that the Parks and Recreation Commission receive an update on the planning and design of pickleball courts to be constructed at Orange Memorial Park and provide feedback to the design team.**

### **BACKGROUND/DISCUSSION**

Pickleball remains among the fastest growing sport in the country - and South San Francisco is not immune to this popular phenomenon. The sport employs the use of paddles and pickleballs, similar to a whiffle ball, and a net.

A pickleball court is the same size as a doubles badminton court and measures 20 feet by 44 feet. Courts can be constructed specifically for pickleball or can be converted using existing tennis or badminton courts. In most cases, a single tennis court can be striped with four pickleball courts within the same footprint. The sport, with its smaller playing area, is accessible to those of all abilities, ages, and skill levels.

In recent years, the Department has expanded pickleball programs, in large part due to community demand for this growing sport. Currently, the Department offers weekly drop-in programs at the Terrabay Gymnasium.

The City does not have any permanent pickleball facilities. Starting in fiscal year 2017/18, the Department striped existing tennis courts with pickleball lines for shared use at Buri Buri Park, Stonegate Tennis Courts, and Westborough Park. The tennis court at Sellick Park presently serves as a pilot project site for dedicated pickleball. Still, conflicts with tennis users remain at most locations, as do noise concerns from park neighbors. For this reason, a more thoughtful approach to design and community outreach is needed.

The Orange Memorial Park Master Plan does envision the construction of six new pickleball courts located in the vacant lot between Eucalyptus Drive and the existing Tennis Courts. Based on feedback from when dedicated pickleball courts were piloted on the standalone tennis court (court #5) at Orange Memorial Park, it was determined that this location was too close to homes, and numerous noise complaints were received.

Understanding the need for dedicated facilities, \$650,000 in park construction funding was requested and approved to design and construct pickleball courts in fiscal year 2024/25. After cursory design and cost estimating work, additional funding was determined necessary to complete this project, and in the fiscal year 2025/26 budget, \$400,000 in additional park construction funds were secured for a total project budget of \$1,050,000.

A design team, led by landscape architects from Callander Associates, is now considering locating the courts at Orange Memorial Park where the existing skate park is housed. It should also be noted that in the Orange Memorial Park Master Plan, which was informed by thousands of touchpoints with the public, does already consider the removal of the skate park here for other park amenities to include a central gathering area. Still, relocation of skate elements to other park sites, namely the future Centennial Way Park North, is being explored.

Community outreach and design has commenced. On Saturday, October 18 during the annual Halloween Extravaganza event, the design team shared renderings with the public. Feedback received will be reported verbally before the Commission as it has not yet taken place at the time of drafting this report.

CONCLUSION

Following the presentation by the design team, feedback from the Commission to inform the design of the pickleball courts is appreciated.



# Orange Memorial Park Pickleball Courts

Parks and Recreation Commission Meeting  
October 21, 2025



# Agenda

- Project Background
  - Project Location
  - Existing Conditions
  - Preliminary Concept Plan
- Implementation Efforts
  - Acoustic Report
  - Refined Concept Plan
  - Community Outreach
  - Construction Budget
- Next Steps



# Project Background

- Project Location
- Existing Conditions
- Concept Plan



# Existing Conditions

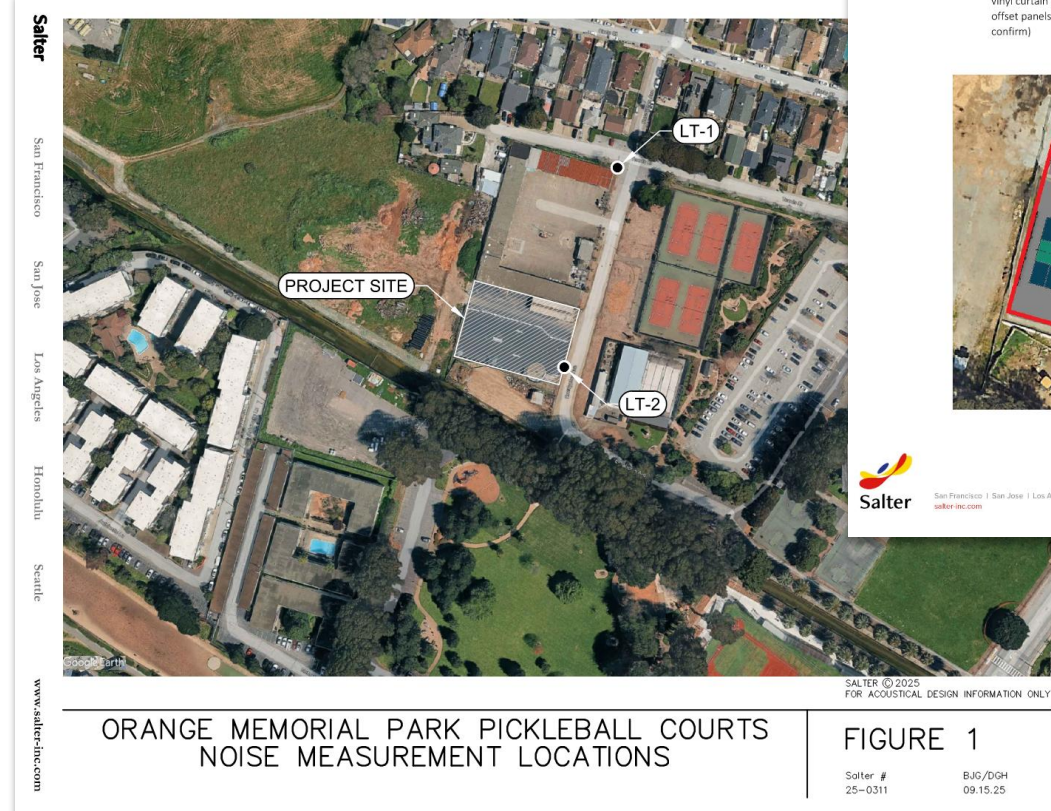


# Existing Conditions



# Acoustic Report

- Current Site Noise: **56-59 dBA avg.**
  - City of South San Francisco Noise Ordinance:
    - (7am-10pm): 60 dBA
    - (10pm-7am): 50-55 dBA
- 
- With Pickleball (No mitigation):  
**56-57 dBA avg. pickleball noise**  
**(64 dBA when ball hits paddle)**
  - With Pickleball (With mitigation):  
**49-50 dBA avg. pickleball noise**  
**(57 dBA when ball hits paddle)**



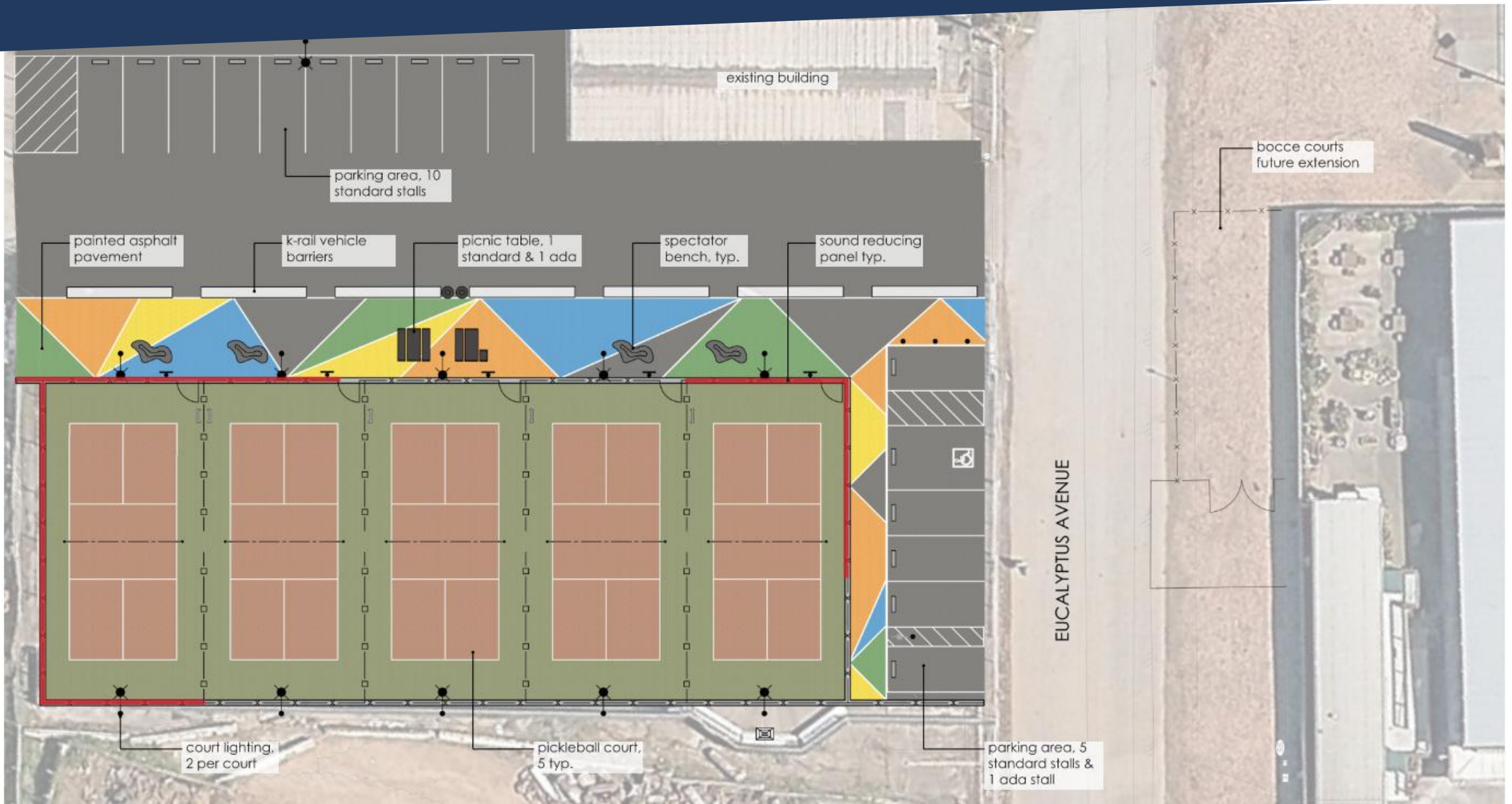
## 1. Sound Isolating Barriers around Pickleball Courts

- Provide a noise barrier at the south and east sides of the Pickleball court (as indicated in Figure 2). The goal would be to break the direct line of sight between the courts and the residences and further reduce noise to help meet the municipal code criteria and approach similar levels to the ambient noise in the neighborhood.
- We expect a barrier with the following characteristics would reduce pickleball noise by as much as 7 dB at all three locations, which would be considered a "noticeable" reduction and would reduce pickleball noise to a level below the average ambient (see Table 4 below):
- Be at least 9ft in height
  - Be continuous (free of cracks and gaps)
  - Be constructed of a material with a minimum surface density of 2 lb/psf, such as mass-loaded vinyl curtain (<https://kineticsnoise.com/environmental/sound-curtains>) or plywood with offset panels (although this could pose some wind related structural issues, others to confirm)

Figure 2: Recommended Barrier Locations



# Refined Concept Plan



# Proposed Site Furnishings

Picnic Table



ADA Picnic Table



Sound Reducing Panels



Freestanding Bench



Solar Powered Court Lighting



Trash Receptacle



Bollard



# Skate Space Relocation

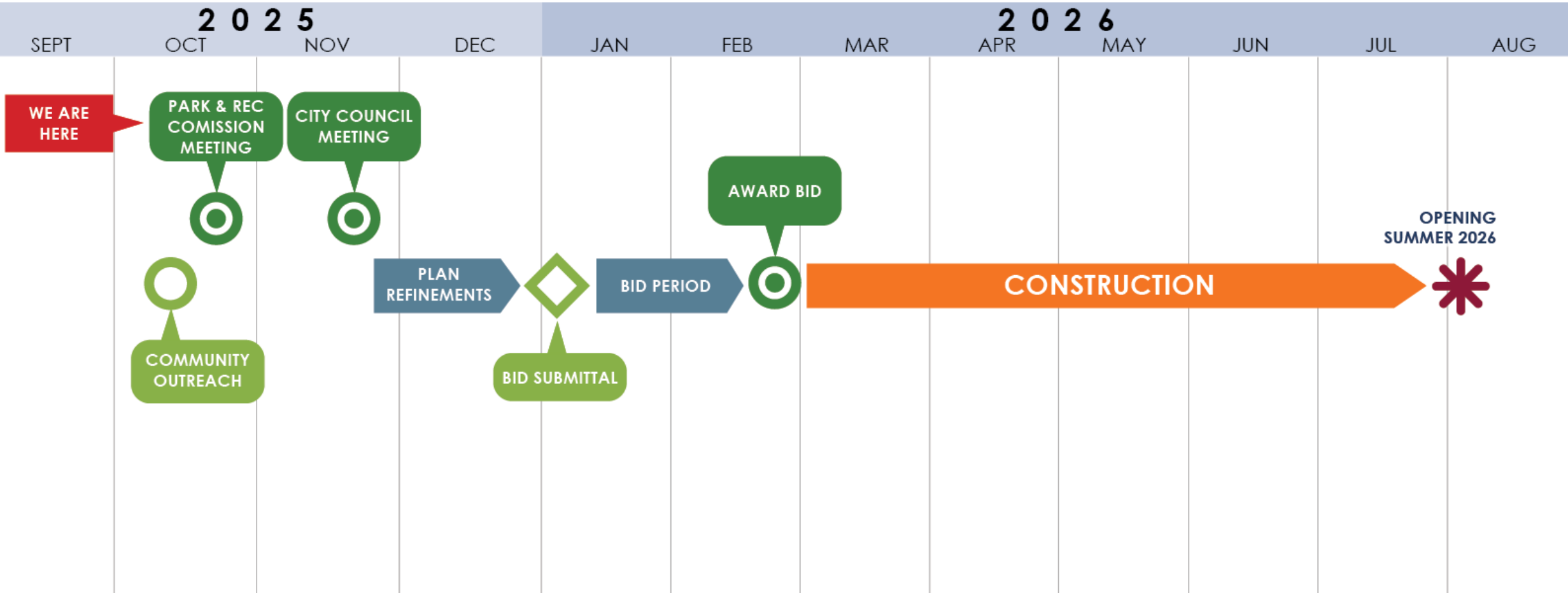
Proposed location  
was identified in the  
Centennial Trail  
Master Plan



# Construction Budget

Subtotal Construction Cost .....	\$724,820.00
Construction Contingency .....	\$72,480.00
<b>Total Estimated Construction Cost &amp; Contingency .....</b>	<b>\$797,300.00</b>

# Next Steps





# Questions?