

# Orange Memorial Park Veterans Memorial

Veterans Stakeholder Meeting #3  
April 24, 2025



## AGENDA

---

Introductions & Meeting Goals

---

Project Background

---

Memorial Design

---

Dedication Plaques

---

Eternal Flame Refresh

## MEETING GOALS



Provide update on relocation of Veteran Memorial elements



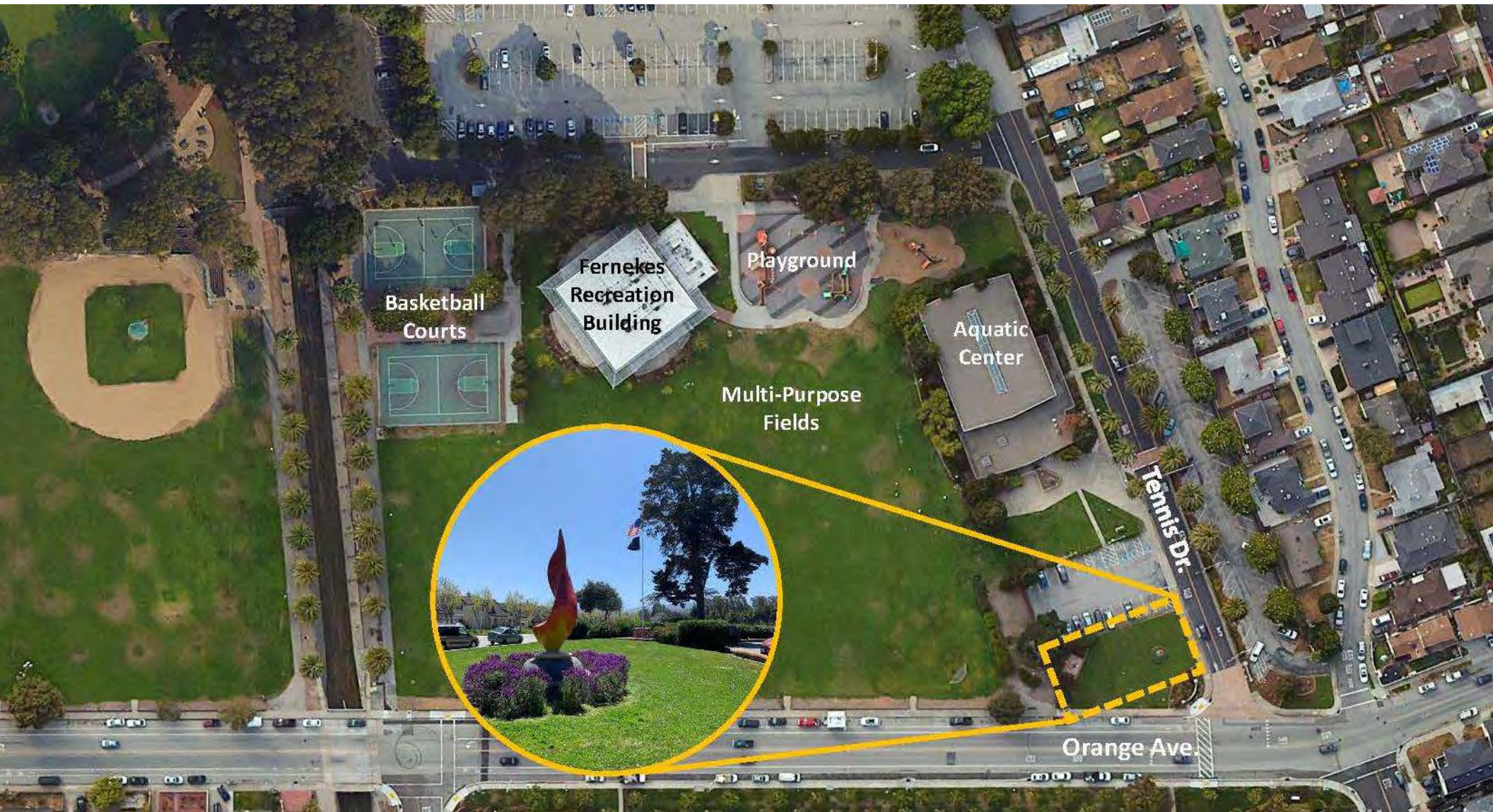
Gather feedback on dedication plaques



Share process for Eternal Flame Refresh



# FORMER LOCATION





# MEMORIAL ELEMENTS





# EVENT SETUP





# LOCATIONS CONSIDERED

## LOCATION #1



- Pros:**
- Centrally located within plaza.
  - Within vicinity of original location.
  - Highly Visible/Main focal point within Aquatic center plaza.
  - Can provide planting buffer for protection.
- Cons:**
- No longer visible from Orange Ave.

## LOCATION #2



- Pros:**
- Centrally located along Orange Ave.
  - Visible from Orange Ave.
- Cons:**
- No planting buffer.
  - Susceptible to being climbed on.



## LOCATION #3



- Pros:**
- Centrally located within park extension plaza.
  - Can locate American flag in landscape area.
- Cons:**
- No longer visible from Orange Ave. nor Tennis Dr.
  - Transition period may take longer.
  - Without planting buffer, could be susceptible to being climbed on.

## LOCATION #4

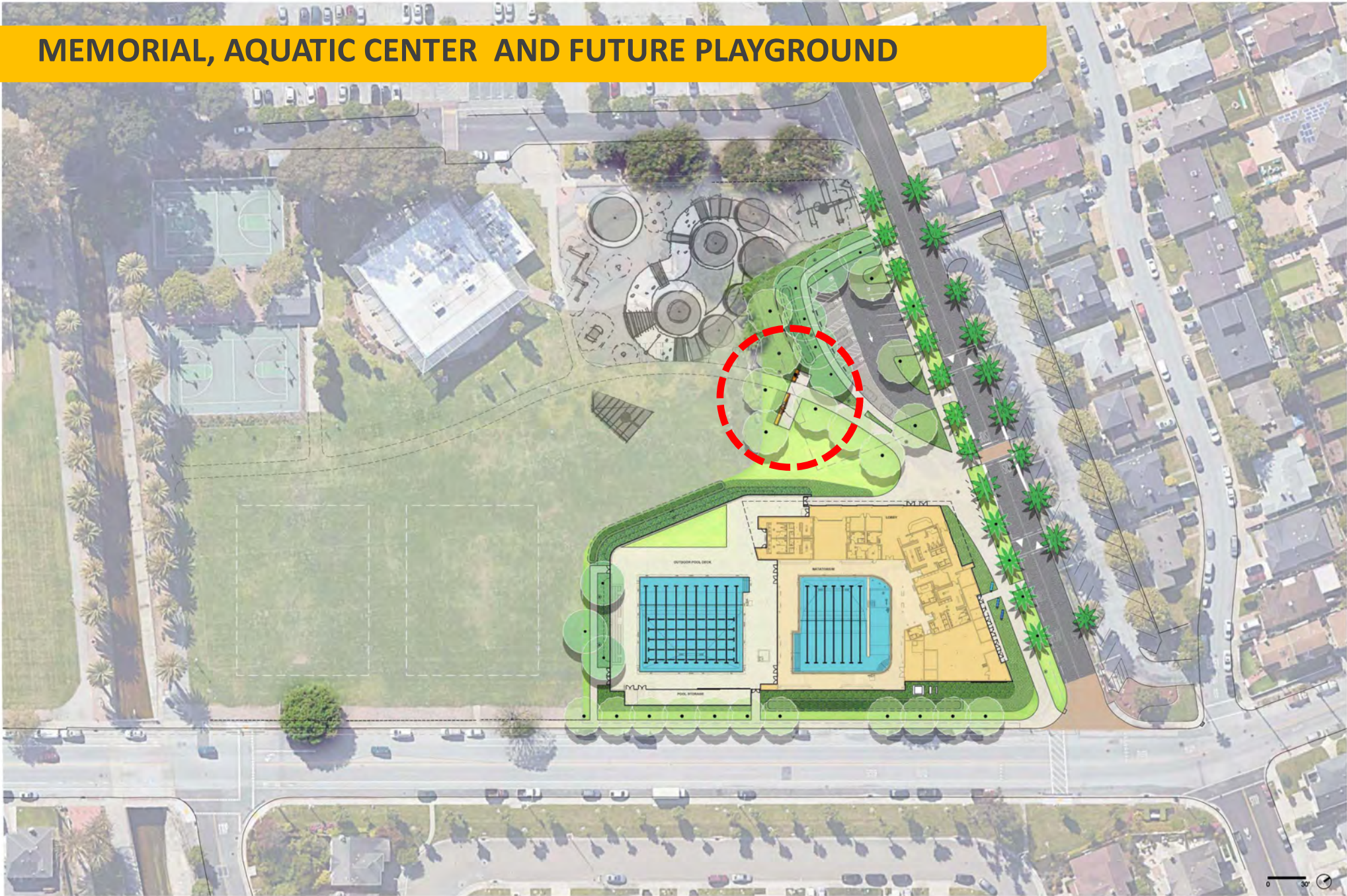


- Pros:**
- Within vicinity of original location.
  - Highly Visible from Orange Ave.
  - Located near park entrance.
  - Faster relocation transition period.
- Cons:**
- Not within main park.





# MEMORIAL, AQUATIC CENTER AND FUTURE PLAYGROUND



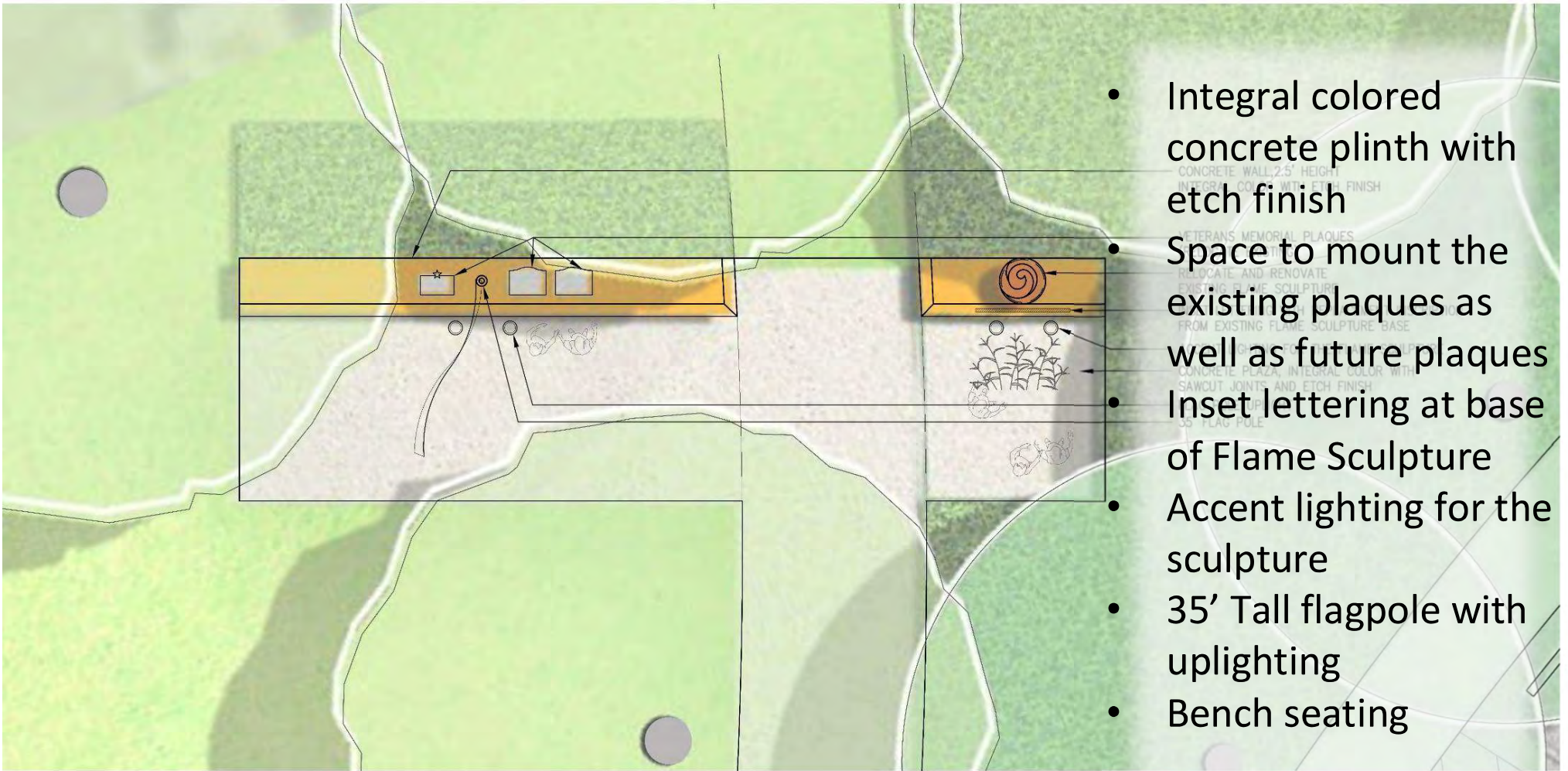


# VETERANS MEMORIAL





# VETERANS MEMORIAL



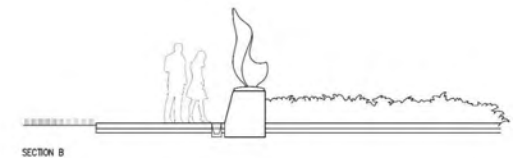
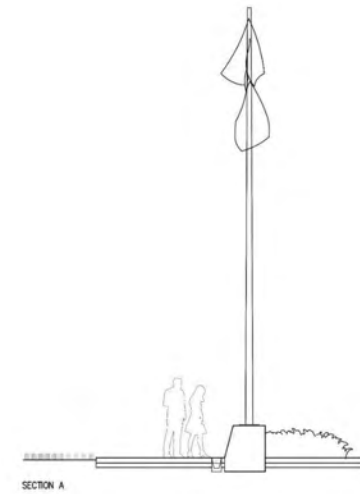
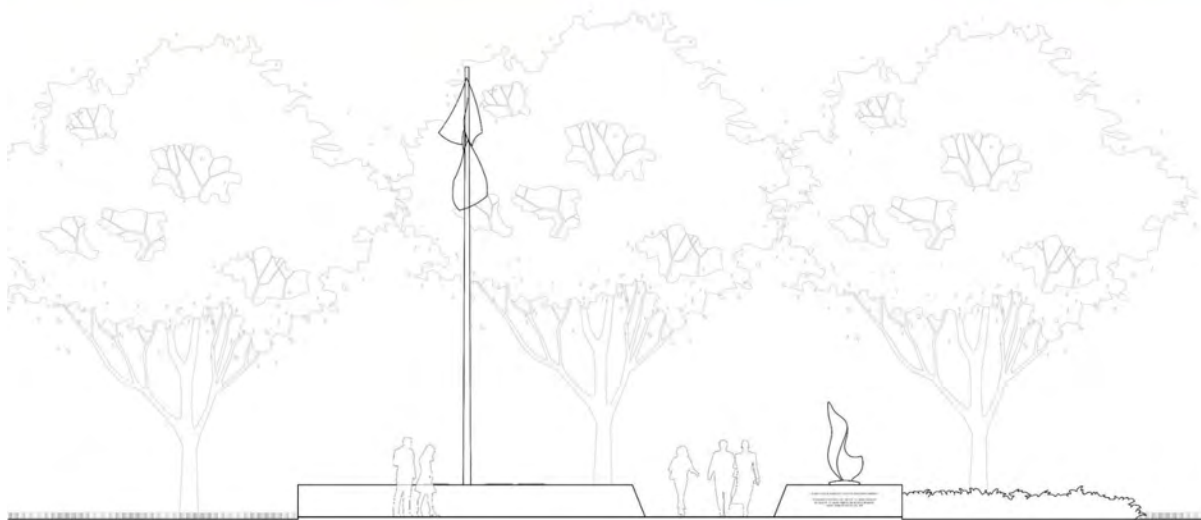
- Integral colored concrete plinth with etch finish
- Space to mount the existing plaques as well as future plaques
- Inset lettering at base of Flame Sculpture
- Accent lighting for the sculpture
- 35' Tall flagpole with uplighting
- Bench seating



# VETERANS MEMORIAL



PLAN





# CONSTRUCTION SCHEDULE

## PHASE 1

Opening Early 2026

## PHASE 2

Completion Summer 2026



## DEDICATION PLAQUE EXPANSION

### ELIGIBILITY CRITERIA

South San Francisco Veterans who died in line of duty or from service-connected exposure

### SUBMISSION DEADLINE

June 8th, 2025

Printed survey forms available at the Grand Library, Teglia Center and the LPR.



— ★ THE NEW ★ —

# VETERAN'S MEMORIAL

AT ORANGE MEMORIAL PARK

— ★ ★ ★ ★ —

If you know a South San Francisco Veteran who should be recognized at the memorial, please fill out this survey:

<https://www.ssf.net/vmsurvey>



— ★ ★ ★ ★ —

For more information about the project, please visit [www.ssf.net/veterans-memorial](http://www.ssf.net/veterans-memorial)







## ETERNAL FLAME SCULPTURE

- Sculpture to be refreshed prior to installation
- Consultation with Cultural Arts Commission
- Request for Proposals
- Community Engagement





## NEXT STEPS

**[www.ssf.net/veterans-memorial](http://www.ssf.net/veterans-memorial)**

- Plaque Update
- Sculpture Community Engagement Opportunities
- Project Schedule
- Sign-up for Email Updates

