

»»»» SOUTH CITY ««««

BLUEPRINT BUZZ

Public Works Engineering Project Updates and Insights



2026 First Edition

Storm Drain Capture Devices Project

Project Manager: Lawrence Henriquez, Professional Engineer

Why This Project Matters

Trash that enters storm drains flows directly into local creeks and the San Francisco Bay, harming wildlife, degrading water quality, and increasing long-term cleanup costs.

The Municipal Regional Stormwater Permit (MRP) required cities to achieve 100% trash load reduction in municipal storm systems by January 2026.

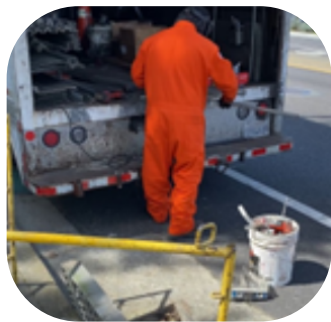
Protecting waterways is both an environmental responsibility and a regulatory requirement.

What We've Accomplished

Since 2023, the City has implemented a citywide storm drain trash capture program:

- Installed over 100 trash capture devices at key storm drain inlets
- Strategically prioritized high-trash, high-impact locations
- Completed three years of sustained planning, fabrication, and installation

As of January 2026, the City has achieved 100% compliance with MRP trash reduction requirements.



Field Fabrication



Installation at Storm Inlet

The Vision

A cleaner, more sustainable South San Francisco where:

- Trash is captured before reaching creeks and the Bay
- Storm drain infrastructure is proactively managed
- Environmental stewardship is built into everyday operations

This project represents a long-term investment in protecting local ecosystems and maintaining regulatory compliance.



Final Product in Operation

Next Steps

- Finalize and implement a Storm Drain Asset Management Plan
- Continue monitoring and maintaining installed devices
- Identify repair or replacement needs to ensure long-term effectiveness

Key Points at a Glance

- ✓ 100% Trash Load Reduction Achieved
- ✓ Citywide Installation of Trash Capture Devices
- ✓ Compliance with State Stormwater Mandate
- ✓ Ongoing Infrastructure Monitoring and Maintenance

Unlock the blueprint.

Scan the QR code for instant access to detailed project insights.

SCAN ME



By capturing trash before it reaches our creeks and the Bay, the City is making a lasting investment in cleaner neighborhoods and a healthier environment for South San Francisco.